




# PARTYBOX Encore



**OWNER'S MANUAL**

## IMPORTANT SAFETY INSTRUCTIONS

### For all products:

1. Read these instructions.
2. Keep these instructions.
3. Heed all warnings.
4. Follow all instructions.
5. Clean only with a dry cloth.
6. Do not block any ventilation openings. Install this apparatus in accordance with the manufacturer's instructions.
7. Do not install this apparatus near any heat sources such as radiators, heat registers, stoves or other apparatus (including amplifiers) that produce heat.
8. Do not defeat the safety purpose of the polarized or grounding-type plug. A polarized plug has two blades with one wider than the other. A grounding-type plug has two blades and a third grounding prong. The wide blade or the third prong is provided for your safety. If the provided plug does not fit into your outlet, consult an electrician for replacement of the obsolete outlet.
9. Protect the power cord from being walked on or pinched, particularly at plugs, convenience receptacles and the point where they exit from the apparatus.
10. Use only attachments/accessories specified by the manufacturer.
11. Use only with the cart, stand, tripod, bracket or table specified by the manufacturer or sold with the apparatus. When a cart is used, use caution when moving the cart/apparatus combination to avoid injury from tip-over. 
12. Unplug this apparatus during lightning storms or when unused for long periods of time.
13. Refer all servicing to qualified service personnel. Servicing is required when the apparatus has been damaged in any way, such as when the power-supply cord or plug is damaged, liquid has been spilled or objects have fallen into the apparatus, or the apparatus has been exposed to rain or moisture, does not operate normally or has been dropped.
14. To disconnect this apparatus from the AC mains completely, disconnect the power-supply cord plug from the AC receptacle.
15. The mains plug of the power-supply cord shall remain readily operable.
16. This apparatus is intended to be used only with the power supply and/or charging cable provided by the manufacturer.

The following instructions may not apply to waterproof devices. Refer to your device user manual or quick start guide for more waterproof instruction if any.

- Do not use this apparatus near water.
- Do not expose this apparatus to dripping or splashing, and ensure that no objects filled with liquids, such as vases, are placed on the apparatus.

**WARNING:** To reduce the risk of fire or electric shock, do not expose this apparatus to rain or moisture.

## CAUTION

### RISK OF ELECTRIC SHOCK. DO NOT OPEN.



THIS SYMBOL ON THE PRODUCT MEANS THERE IS UNINSULATED, DANGEROUS VOLTAGE WITHIN THE PRODUCT ENCLOSURE THAT MAY PRESENT A RISK OF ELECTRICAL SHOCK.



THIS SYMBOL ON THE PRODUCT MEANS THERE ARE IMPORTANT OPERATING AND MAINTENANCE INSTRUCTIONS IN THIS GUIDE.

### CAUTION FCC AND IC STATEMENT FOR USERS (USA AND CANADA ONLY)

This device complies with part 15 of the FCC Rules. Operation is subject to the following two conditions: (1) This device may not cause harmful interference, and (2) this device must accept any interference received, including interference that may cause undesired operation.

CAN ICES-003(B)/NMB-003(B)

### FCC SDOC SUPPLIER'S DECLARATION OF CONFORMITY

HARMAN International hereby declares that this equipment is in compliance with the FCC Part 15 Subpart B.

The declaration of conformity may be consulted in the support section of our Web site, accessible from [www.jbl.com](http://www.jbl.com)

### Federal Communication Commission Interference Statement

This equipment has been tested and found to comply with the limits for a Class B digital device, pursuant to Part 15 of the FCC Rules. These limits are designed to provide reasonable protection against harmful interference in a residential installation. This equipment generates, uses and can radiate radio frequency energy and, if not installed and used in accordance with the instructions, may cause harmful interference to radio communications. However, there is no guarantee that interference will not occur in a particular installation. If this equipment does cause harmful interference to radio or television reception, which can be determined by turning the equipment off and on, the user is encouraged to try to correct the interference by one or more of the following measures:

- Reorient or relocate the receiving antenna.
- Increase the separation between the equipment and receiver.
- Connect the equipment into an outlet on a circuit different from that to which the receiver is connected.
- Consult the dealer or an experienced radio/TV technician for help.

**CAUTION:** Changes or modifications not expressly approved by HARMAN could void the user's authority to operate the equipment.

## For Products That Transmit RF Energy:

### (i) FCC AND IC INFORMATION FOR USERS

This device complies with Part 15 of the FCC rules and Industry Canada license-exempt RSS standard(s). Operation is subject to the following two conditions: (1) This device may not cause harmful interference; and (2) this device must accept any interference received, including interference that may cause undesired operation.

### (ii) FCC/IC Radiation Exposure Statement

This equipment complies with FCC and ISED radiation exposure limits set forth for an uncontrolled environment. This equipment should be installed and operated with minimum distance 20cm between the radiator & your body.

In case this equipment has to subject to FCC/IC SAR (Specific Absorption Rate) exposure test, this equipment is designed to meet the requirements for exposure to radio waves established by the FCC and ISED. These requirements set a SAR limit of 1.6 W/kg averaged over one gram of tissue. The highest SAR value reported under this standard during product certification for use when properly worn on the body or on the head, with no separation. To meet RF exposure guidelines and reduce exposure to RF energy during the operation, this equipment should be positioned at least this distance away from the body or the head.

## For radio equipment operates in 5150-5850MHz

### FCC and IC Caution:

High power radars are allocated as primary users of the 5.25 to 5.35 GHz and 5.65 to 5.85 GHz bands. These radar stations can cause interference with and/or damage to LE LAN (Licence-Exempt Local Area Network) devices. No configuration controls are provided for this wireless equipment allowing any change in the frequency of operations outside the FCC grant of authorization for US operation according to Part 15.407 of the FCC rules.

### IC Caution:

User should also be advised that:

- (i) The device for operation in the band 5150 - 5250 MHz is only for indoor use to reduce the potential for harmful interference to co-channel mobile satellite systems; (ii) the maximum antenna gain permitted for devices in the bands 5250 - 5350 MHz and 5470 - 5725 MHz shall comply with the e.i.r.p. limit: and
- (ii) The maximum antenna gain permitted for devices in the band 5725 - 5825 MHz shall comply with the e.i.r.p. limits specified for point-to-point and non point-to-point operation as appropriate.

**Use Restriction** Attention in European Union, operation is limited to indoor use within the band 5150-5350 MHz.

**Correct disposal of this product** (Waste Electrical & Electronic Equipment)



This symbol means the product must not be discarded as household waste, and should be delivered to an appropriate collection facility for recycling. Proper disposal and recycling helps protect natural resources, human health and the environment. For more information on disposal and recycling of this product, contact your local municipality, disposal service, or the shop where you bought this product.

## This product is RoHS compliant.

This product is in compliance with Directive 2011/65/EU and UK The Restriction of the Use of Certain Hazardous Substances in Electrical and Electronic Equipment Regulations 2012, and its amendments, on the restriction of the use of certain hazardous substances in electrical and electronic equipment.

## REACH

REACH (Regulation No 1907/2006) addresses the production and use of chemical substances and their potential impacts on human health and the environment. Article 33(1) of REACH Regulation requires suppliers to inform the recipients if an article contains more than 0.1 % (per weight per article) of any substance(s) on the Substances of Very High Concern (SVHC) Candidate List ('REACH candidate list'). This product contains the substance "lead"(CAS-No. 7439-92-1) in a concentration of more than 0.1% per weight.

At the time of release of this product, except for the lead substance, no other substances of REACH candidate list are contained in a concentration of more than 0.1% per weight in this product.

Note: On June 27, 2018, lead was added to the REACH candidate list. The inclusion of lead in the REACH candidate list does not mean that lead-containing materials pose an immediate risk or results in a restriction of permissibility of its use.

## For devices with headphone jacks

### WARNINGS/CAUTIONS



Do NOT use the headphones at a high volume for any extended period.

- To avoid hearing damage, use your headphones at a comfortable, moderate volume level.
- Turn the volume down on your device before placing the headphones on your ears, then turn the volume up gradually until you reach a comfortable listening level.

## For Products That Include Batteries

### Instructions for Users on Removal, Recycling and Disposal of Used Batteries

To remove the batteries from your equipment or remote control, reverse the procedure described in the owner's manual for inserting batteries. For products with a built-in battery that lasts for the lifetime of the product, removal may not be possible for the user. In this case, recycling or recovery centers handle the dismantling of the product and the removal of the battery. If, for any reason, it becomes necessary to replace such a battery, this procedure must be performed by authorized service centers. In the European Union and other locations, it is illegal to dispose of any battery with household trash. All batteries must be disposed of in an environmentally sound manner. Contact your local waste-management officials for information regarding the environmentally sound collection, recycling and disposal of used batteries.

**WARNING:** Danger of explosion if battery is incorrectly replaced. To reduce risk of fire, explosion or leakage of flammable liquid/gas, don't disassemble, crush, puncture, short external contacts, expose to temperature above 60°C (140°F), sunshine or like, expose to extremely low air pressure or dispose of in fire or water. Replace only with specified batteries. The symbol indicating 'separate collection' for all batteries and accumulators shall be the crossed-out wheeled bin shown below:



### For All Products with Wireless Operation:

HARMAN International hereby declares that this equipment is in compliance with the essential requirements and other relevant provisions of Directive 2014/53/EU and UK Radio Equipment Regulations 2017. The declaration of conformity may be consulted in the support section of our Web site, accessible from [www.jbl.com](http://www.jbl.com).

## EPILEPSY WARNING

**A few people may experience epileptic seizures when viewing flashing lights.**

# TABLE OF CONTENTS

---

<b>IMPORTANT SAFETY INSTRUCTIONS</b>	<b>2</b>
--------------------------------------	----------

---

<b>1. INTRODUCTION</b>	<b>6</b>
------------------------	----------

---

<b>2. WHAT'S IN THE BOX</b>	<b>6</b>
-----------------------------	----------

---

<b>3. PRODUCT OVERVIEW</b>	<b>7</b>
----------------------------	----------

3.1 TOP PANEL	7
---------------	---

3.2 BACK PANEL	7
----------------	---

---

<b>4. PLACEMENT</b>	<b>8</b>
---------------------	----------

---

<b>5. POWER ON</b>	<b>8</b>
--------------------	----------

---

<b>6. USING YOUR PARTYBOX</b>	<b>9</b>
-------------------------------	----------

6.1 BLUETOOTH CONNECTION	9
--------------------------	---

6.2 USB CONNECTION	9
--------------------	---

6.3 MUSIC CONTROL	10
-------------------	----

6.4 AUX CONNECTION	10
--------------------	----

6.5 MIXING SOUND WITH A MICROPHONE	10
------------------------------------	----

6.6 CHARGING YOUR MOBILE DEVICE	11
---------------------------------	----

---

<b>7. CARRYING YOUR PARTYBOX</b>	<b>12</b>
----------------------------------	-----------

---

<b>8. ADVANCED USAGE</b>	<b>12</b>
--------------------------	-----------

8.1 JBL PARTYBOX APP	12
----------------------	----

8.2 LIGHT EFFECT	12
------------------	----

8.3 TWS MODE	12
--------------	----

8.4 FACTORY RESET	13
-------------------	----

8.5 IPX4	13
----------	----

---

<b>9. SPECIFICATIONS</b>	<b>13</b>
--------------------------	-----------

---

<b>10. TROUBLESHOOTING</b>	<b>14</b>
----------------------------	-----------

---

<b>11. COMPLIANCE</b>	<b>14</b>
-----------------------	-----------

---

<b>12. TRADEMARK</b>	<b>15</b>
----------------------	-----------

---

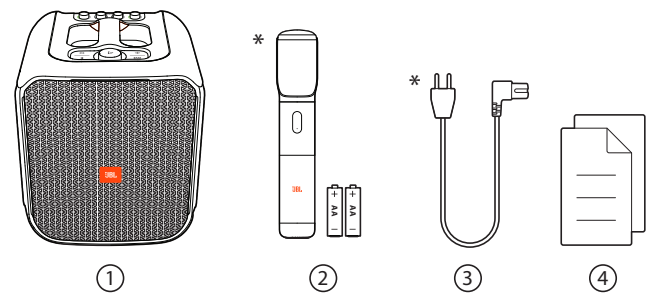
## 1. INTRODUCTION

Congratulations on your purchase! This manual includes information about the **PARTYBOX Encore** speaker. We encourage you to take a few minutes to read this manual, which describes the product and includes step-by-step instructions to help you to set up and get started. Read and understand all the safety instructions before using your product.

If you have any questions about this product, its installation or operation, please contact your retailer or customer service, or visit us at [www.jbl.com](http://www.jbl.com).

---

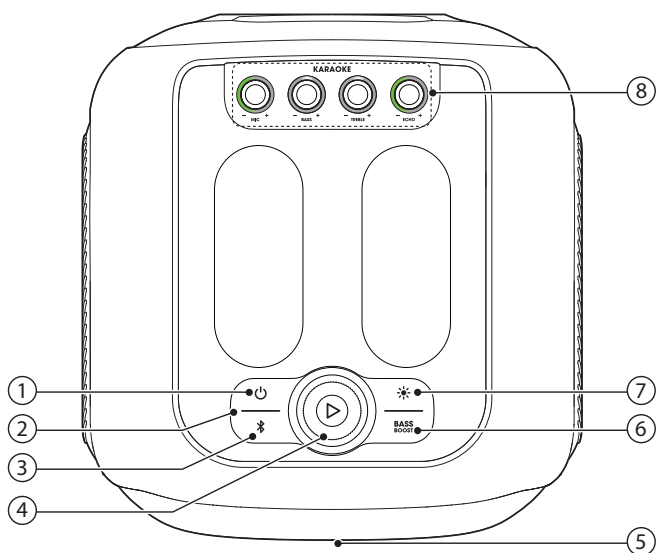
## 2. WHAT'S IN THE BOX



- 1) Main unit
  - 2) Wireless microphone (with two Alkaline AA batteries)\*
  - 3) Power cord\*
  - 4) Quick Start Guide, Safety Sheet, Warranty Card
- \* Power cord quantity, plug type and microphone quantity vary by regions.

## 3. PRODUCT OVERVIEW

### 3.1 Top Panel



- 1)
  - Turn the power on or off.
- 2) **Battery level indicator**
- 3)
  - Press to enter Bluetooth pairing mode.
  - Press and hold for more than 10 seconds to forget all paired devices.
- 4)
  - Press to play, pause or resume.
  - Rotate clockwise / counterclockwise to increase / decrease the main volume.
- 5) **LED ring**
- 6) **BASS BOOST**
  - Selects bass enhancement preset 1, preset 2, or off.
- 7)
  - Press switch between different light patterns.
  - Hold for more than 2 seconds to turn strobe light on or off.
- 8) **KARAOKE**
  - **BASS +**
    - Adjust the bass level.
  - **TREBLE +**
    - Adjust the treble level.
  - **ECHO +**
    - Adjust the echo level.
  - **MIC +**
    - Adjust microphone volume (if connected).

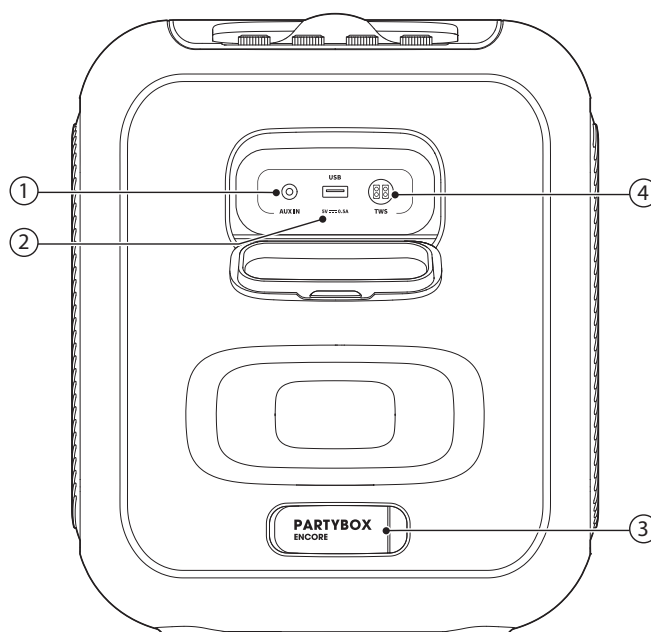
#### Caution:

- Do not look directly at the light-emitting parts when the speaker lights are turned on.

### LED behavior

	Solid white	Power on
	Off	Standby / Power off
	Flashing white quickly	Pairing
	Solid white	Connected
	Off	Not connected
<b>BASS BOOST</b>	Dimmed white	Preset 1
	Solid white	Preset 2
	Off	Off
	Flashing red quickly	Low battery
	Flashing white slowly	Charging
	Solid white	The speaker is fully charged when the entire light stripe turns solid white.

### 3.2 Back Panel



- 1) **AUX IN**
  - Connect to an external audio device through a 3.5 mm audio cable (not supplied)
- 2) **USB**
  - Connect to a USB storage device.
  - Charge your mobile device.
- 3) **AC**
  - Connect to AC power supply.
- 4) **TWS**
  - Press to enter True Wireless Stereo (TWS) pairing mode.

## 4. PLACEMENT

### Caution:

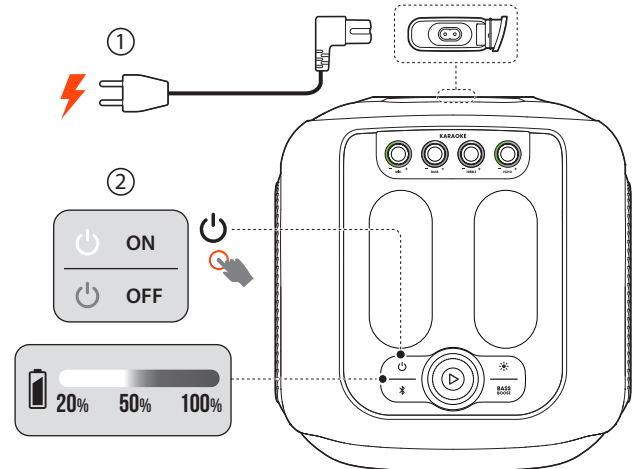
- Do not sit on the speaker to avoid possible damages.


Place the speaker on a flat, stable surface and ensure that the rubber feet side is down.

## 5. POWER ON


### Cautions:

- Use the provided power cords only.
- You can use either AC power or the built-in battery as power supply to the speaker.



1. Connect AC power.
  - To use the built-in battery, disconnect AC power after charging the speaker.
2. Press  to power on.

### Tips:

- Fully charge the speaker before first-time use to prolong the lifespan of the built-in battery.
- When the speaker is on, you can check the battery level by pressing any button on the speaker.
- The speaker switches to standby mode automatically after 20 minutes of inactivity. You can press  on the speaker to switch to normal operation.



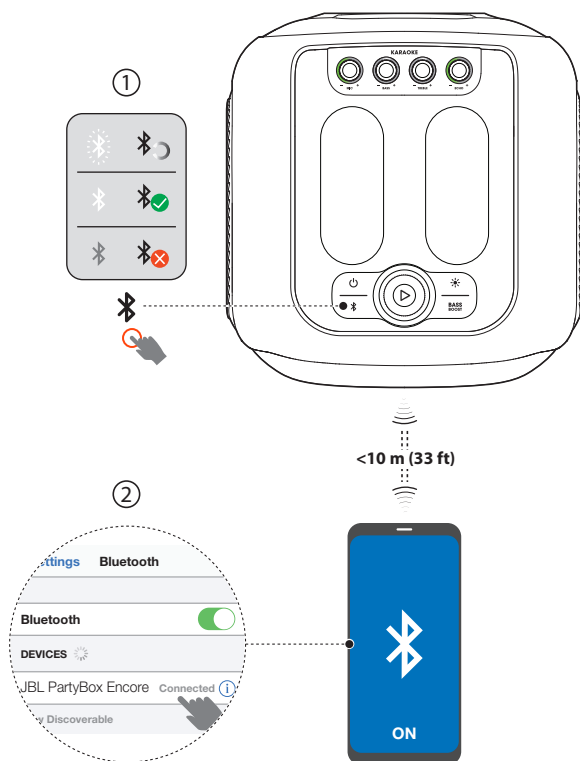
## 6. USING YOUR PARTYBOX

### Notes:

- Only one sound source can be played at a time. The priority order is **USB** -> **BLUETOOTH** -> **AUX**.
- Starting a source with higher priority will always interrupt a source with lower priority.
- To start a source with lower priority, stop the source with higher priority first.

### 6.1 Bluetooth Connection

You can use the speaker with your Bluetooth enabled smartphone or tablet.



1. Press on the speaker to enter Bluetooth pairing mode.
2. Choose **JBL PartyBox Encore** on your Bluetooth device to connect.
3. Once successfully connected, you can stream audio from your Bluetooth device to this speaker.

### Notes:

- This speaker can memorize a maximum of 8 paired devices. The ninth paired device will replace the first one.
- Enter “0000” if a PIN code is requested for connection to a Bluetooth device.
- Bluetooth performance can be affected by the distance between this product and your Bluetooth device and the environment of operation.

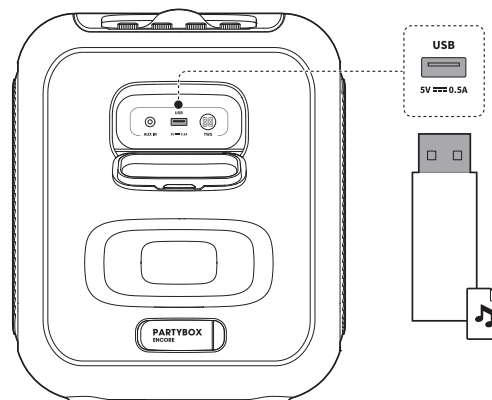
### To terminate the Bluetooth-enabled device:

- Turn off this speaker, or
- Disable Bluetooth on your device.

### To reconnect the Bluetooth enabled device:

- When you turn on this speaker next time, it tries to reconnect the last connected device automatically.
- If not, manually select **JBL PartyBox Encore** on your Bluetooth device to connect.

### 6.2 USB Connection



Plug a USB storage device that contains playable audio contents into the USB port of the speaker.

- The speaker switches to the **USB** source automatically.
- Audio playback will start automatically.

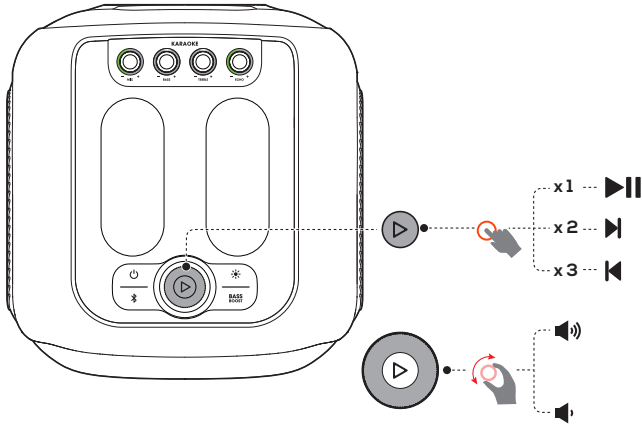
### Tip:

- The speaker plays audio files on the USB storage device from the root folder to the last level of subfolders in alphabetical sequence. Up to 8 levels of subfolders are supported.

### Supported audio formats

Extension	Codec	Sample rate	Bitrate
WAVE	PCM	8 / 11.025 / 12 / 16 / 22.05 / 24 / 32 / 44.1 / 48	384 / 529.2 / 576 / 768 / 1058.4 / 1152 / 1536 / 2116.8 / 2304
MP3	MPEG1 layer2/3	32 / 44.1 / 48	32 / 40 / 48 / 56 / 64 / 80 / 96 / 112 / 128 / 160 / 192 / 224 / 256 / 320
	MPEG2 layer2/3	16 / 22.05 / 24	8 / 16 / 24 / 32 / 40 / 48 / 56 / 64 / 80 / 96 / 112 / 128 / 144 / 160
	MPEG2.5 layer3	8 / 11.025 / 12	8 / 16 / 24 / 32 / 40 / 48 / 56 / 64 / 80 / 96 / 112 / 128 / 144 / 160
WMA		8 / 11.025 / 16 / 22.05 / 32 / 44.1 / 48	5 / 6 / 8 / 10 / 12 / 16 / 20 / 22 / 32 / 36 / 40 / 44 / 48 / 64 / 80 / 96 / 128 / 160 / 192 / 256 / 320

## 6.3 Music Control

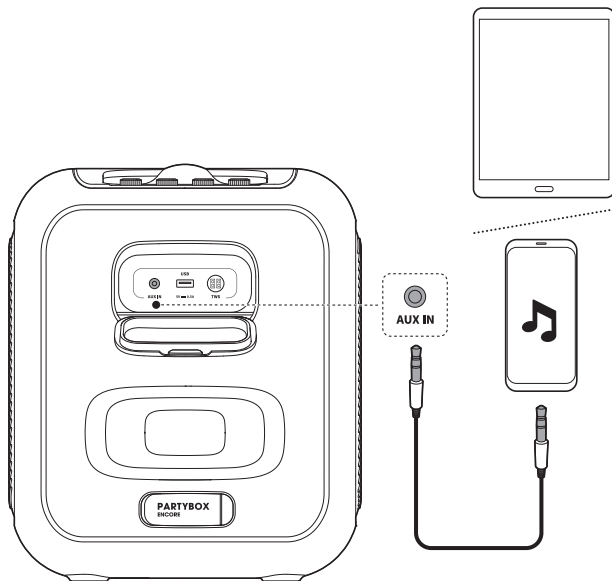


- Press **▶** once to pause or resume playback.
- Press **▶** twice to skip to the next track.
- Press **▶** three times to skip to the previous track.
- Rotate the **▶** knob clockwise / counterclockwise to increase / decrease the main volume.
- Press **BASS BOOST** to enhance the bass level: level 1, level 2, or off.

### Note:

- The skip operation is unavailable in **AUX** mode.

## 6.4 AUX Connection



1. Connect an external audio device to the speaker through a 3.5 mm audio cable (not supplied).
2. After stopping playback from any other source, start audio playback on the external device.

## 6.5 Mixing Sound with a Microphone

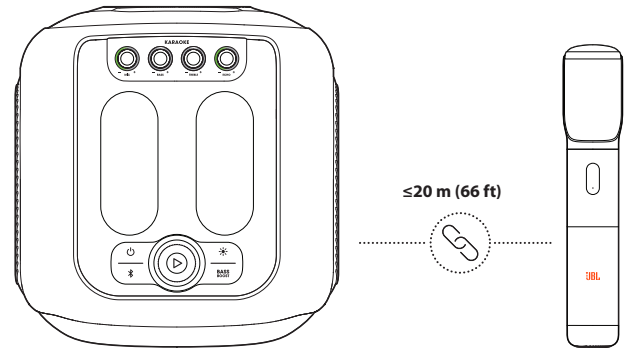
By using a microphone, you can mix sound with an audio source.

### Notes:

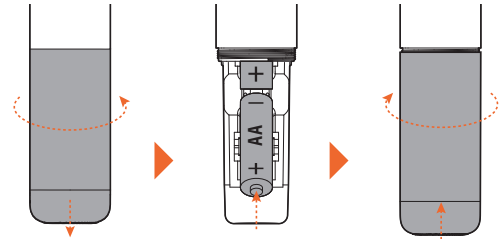
- Always set the microphone volume to the minimum level before microphone connection / disconnection.
- Always power off the microphone when you are not using it.

### 6.5.1 Connecting the Microphone

By default, the wireless microphone comes pre-paired with the speaker at factory.



1. Load the two Alkaline AA batteries with correct polarity.



2. Turn on the speaker and supplied wireless microphone successively.
  - You will hear a prompt tone upon successful setup of wireless connection.

### Note:

- The microphone powers off automatically after 10 minutes of inactivity.

### To connect a new wireless microphone

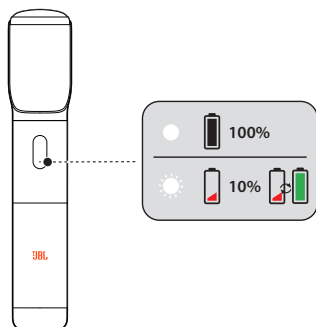
1. Turn off the speaker.
2. Make sure that the distance between the new wireless microphone and speaker is within 1 meter. Turn on the microphone.
3. Turn on the speaker.
  - The microphone will pair and connect with the speaker automatically within 3 minutes.

## To replace wireless microphone batteries

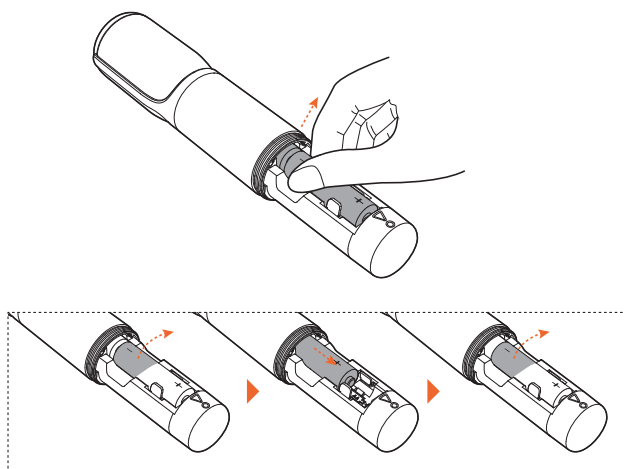
### Cautions:

- Do not mix batteries (old and new or carbon and alkaline, etc.).
- Remove batteries if they are exhausted or if the microphone is not to be used for a long time.
- Batteries contain chemical substances, they should be disposed of properly.

1. Check the battery level.



2. If the battery level is low, replace the old batteries with new ones.

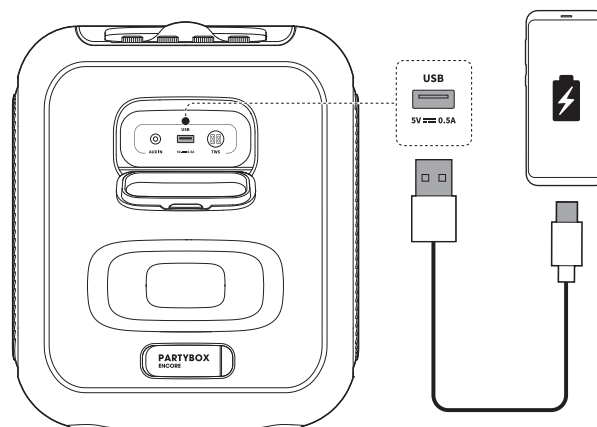


## 6.5.2 Mixing Sound

Sing through the microphone.

- To adjust the volume of the audio source, rotate the ► knob clockwise / counterclockwise.
- Use Karaoke controls at the top of the front panel to adjust volume, bass, treble or echo of the microphone.

## 6.6 Charging Your Mobile Device



## 7. CARRYING YOUR PARTYBOX

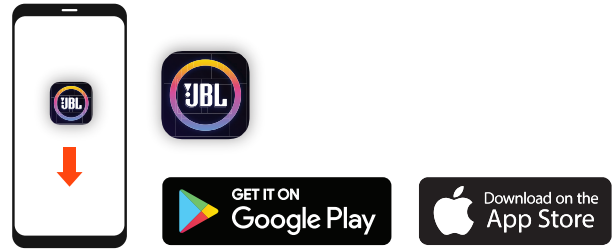
### Cautions:

- Before carrying the speaker, ensure that all the cords are disconnected.
- To avoid personal injury and/or property damage, hold the product firmly while carrying.

Hold the handle on the top firmly to carry the speaker.

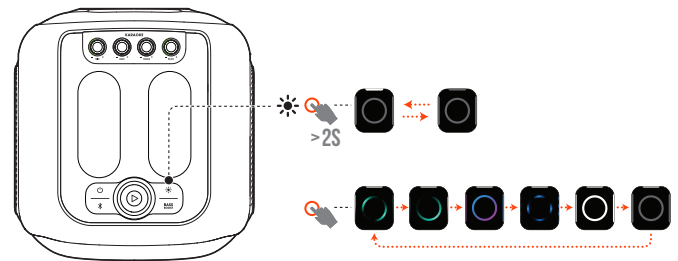
## 8. ADVANCED USAGE



### 8.1 JBL PARTYBOX App



Download and install the JBL PARTYBOX App to get more from the product.

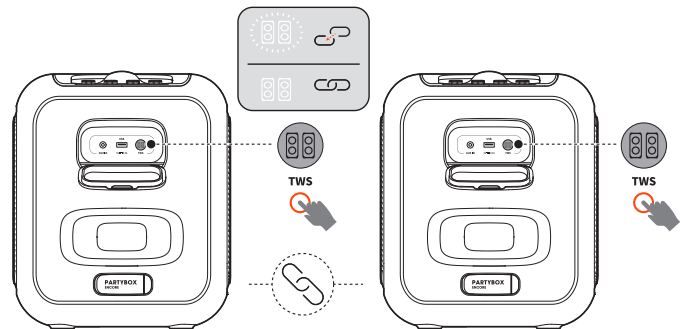
### 8.2 Light Effect



- Press  to select your preferred light effect: rock, flow, cross, ripple, flash, or off.
- Hold  for more than 2 seconds to turn strobe light on or off.

### 8.3 TWS Mode

You can connect two PARTYBOX speakers to each other via TWS mode.



Press **TWS** on both speakers.



### To exit TWS mode:

Power off or press **TWS** on either speaker.

### Tip:

- By default, the speaker connected to your Bluetooth device acts as the primary speaker (left channel), while the other one acts as the secondary speaker (right channel).

## 8.4 Factory reset

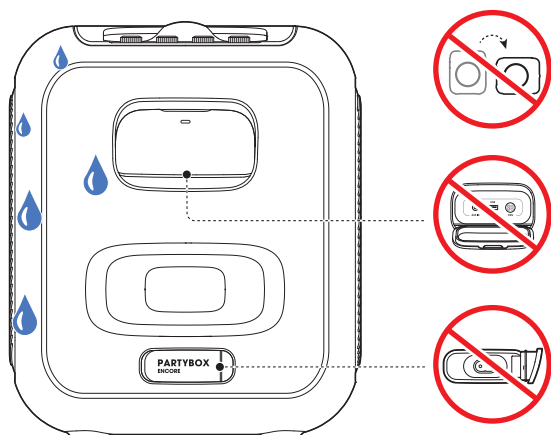
To restore the factory settings, hold  and  for more than 10 seconds.

## 8.5 IPX4

### Caution:

- Always keep the charging port dry before connecting AC power.
- To ensure splash resistance, always keep the protective covers closed securely.

The speaker is IPX4 splash resistant.



## 9. SPECIFICATIONS

<b>Transducers:</b>	1 x 5.25 inch woofer, 2 x 1.75 inch tweeter
<b>Output power:</b>	100 W RMS
<b>Power input:</b>	100-240 V ~ / 50-60 Hz
<b>Frequency response:</b>	50 Hz - 20 kHz @-6 dB
<b>Signal-to-noise ratio:</b>	> 80 dB
<b>Battery type:</b>	Li-ion polymer 27.0 Wh (equivalent to 3.6 V / 7500 mAh)
<b>Battery charge time:</b>	3.5 hours
<b>Music play time:</b>	up to 10 hours (dependent on volume level and audio content)
<b>USB format:</b>	FAT16, FAT32
<b>USB file format:</b>	.mp3, .wma, .wav
<b>USB charge out:</b>	5 V / 0.5 A (maximum)
<b>Cable type:</b>	AC Power Cable
<b>Cable length:</b>	2000 mm / 78.7"
<b>Bluetooth® version:</b>	5.1
<b>Bluetooth® profile:</b>	A2DP 1.3, AVRCP 1.6
<b>Bluetooth® transmitter frequency range:</b>	2.4 GHz - 2.4835 GHz
<b>Bluetooth® transmitter power:</b>	< 9 dBm (EIRP)
<b>Bluetooth® transmitter modulation:</b>	GFSK, π/4 DQPSK, 8DPSK
<b>Product dimensions (W x H x D):</b>	276 mm x 327 mm x 293 mm/ 10.87" x 12.87" x 11.54"
<b>Net weight:</b>	6.3 kg / 13.89 lbs
<b>Packaging dimensions (W x H x D):</b>	472 mm x 354 mm x 326 mm / 18.58" x 13.94" x 12.83"
<b>Gross weight:</b>	8.34 kg / 18.39 lbs

### Wireless microphone spec

<b>Frequency response:</b>	60 Hz - 15.8 kHz
<b>Signal-to-noise ratio:</b>	> 65 dB
<b>Transmitter transmitting power:</b>	< 10 mW
<b>Distance between transmitter and receiver:</b>	≤ 20 m

\* 10 hrs battery playtime is only a reference and may vary depending on music content and battery aging after numerous charging and discharging cycles. It's achievable with a predefined music source, light show and bass boost switched off, volume level at 14 and Bluetooth streaming source.

---

## 10. TROUBLESHOOTING

### Caution:




- Never try to repair the product by yourself. If you have any problems while using this product, check the following points before you request service.

### System

#### The speaker will not turn on.

- Ensure that the speaker battery is not drained. If not, use the AC power instead.

#### No response from some buttons

- The product may be in demo mode. In demo mode, the  and  buttons are disabled. Hold  and **BASS BOOST** simultaneously for more than 5 seconds to exit.


### Sound

#### No sound from the speaker.

- Ensure that the speaker is powered on.
- Adjust volume.
- Ensure that a sound source is active and not muted.

### Bluetooth

#### A device cannot connect with the speaker.

- Ensure that the Bluetooth function of the device is enabled.
- The speaker is already connected with another Bluetooth device. Hold  on the speaker for more than 10 seconds to disconnect and pair with a new device.

#### Poor audio quality from a connected Bluetooth device

- The Bluetooth reception is poor. Move the device closer to the speaker, or remove any obstacle between the device and speaker.

### Wireless microphone

#### No response from the microphone.

- Power on the microphone.
- Replace batteries if the battery level is low.
- Pair the microphone with the speaker manually (see [6.5.1 Connecting the Microphone](#)).

---

## 11. COMPLIANCE

The product is in compliance with the European Union energy legislation.

### Bluetooth connection mode

The product is intended to be used for streaming music via Bluetooth connection. A consumer can stream Bluetooth audio to the speaker. When the product is connected through Bluetooth, the Bluetooth connection must remain active at all times to ensure proper operation.

The product will enter sleep mode (networked standby) after 20 minutes without operation. The power consumption in sleep mode is less than 2.0 Watts, after which it can be re-activated via Bluetooth connection.

### Other mode

The product will enter standby mode after 20 minutes without operation. The power consumption in standby mode is less than 0.5 Watts.

---

## 12. TRADEMARK



The Bluetooth® word mark and logos are registered trademarks owned by Bluetooth SIG, Inc. and any use of such marks by HARMAN International Industries, Incorporated is under license. Other trademarks and trade names are those of their respective owners.



HARMAN International Industries,  
Incorporated 8500 Balboa Boulevard,  
Northridge, CA 91329 USA  
[www.jbl.com](http://www.jbl.com)

© 2023 HARMAN International Industries, Incorporated.  
All rights reserved.

JBL is a trademark of HARMAN International Industries, Incorporated, registered in the United States and/or other countries. Features, specifications and appearance are subject to change without notice.